

Safe for organic uses,  
contains no pesticides.  
Place out of reach  
of children and pets.

Monterey  
Advanced  
Trapping  
System

# Pantry Moth Trap & Lure

## The Pantry Moth Trap & Lure

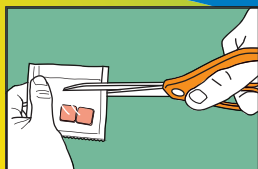
attracts and captures adult flour moths such as Indian meal moth, Mediterranean flour moth, almond moth and raisin moth. These insects occur almost everywhere, and are attracted by food. The moths lay eggs in cracks and crevasses near food, such as in shelving, cupboards and pantries. Adult moths emerge and fly about seeking mates.

## The Pantry Moth Trap & Lure

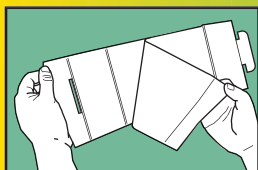
uses the same chemical messenger (pheromone) that female moths use to attract male moths for mating. Male moths are drawn by the scent and are caught in the trap. Removing male moths prevents mating and egg laying. Long term use of the PANTRY MOTH TRAP & LURE will reduce troubling infestations without the use of toxic chemicals.

- 1 Remove lures from foil pouch.
- 2 Assemble traps and place lures in traps.
- 3 Set traps where moths have been seen.

Replace every 3 months, or sooner if full of insects. Use at least 2 traps all year round, but not more than 4 traps in a home. Fewer traps work better.



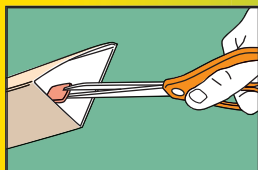
Remove lure from foil pouch



Peel release paper



Assemble trap



Place lure



Set traps where moths are seen



Manufactured for:  
**LAWN AND GARDEN PRODUCTS, INC.**  
P.O. Box 35000 • Fresno, CA 93745  
(559) 499-2100  
info@montereylawngarden.com



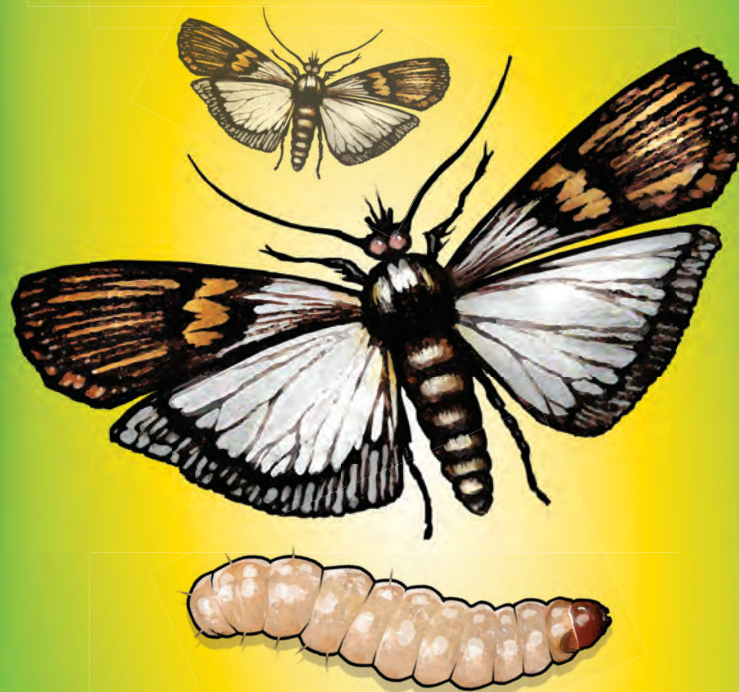
2 Complete Traps and 2 Lures

2 Complete Traps  
and 2 Lures



# Pantry Moth Trap & Lure

Monterey Advanced  
Trapping System



For Use on Grain, Seed  
and Meal Moths

Pantry Moth Trap & Lure

Pantry Moth Trap & Lure

0808-SS(01)  
Made in USA

